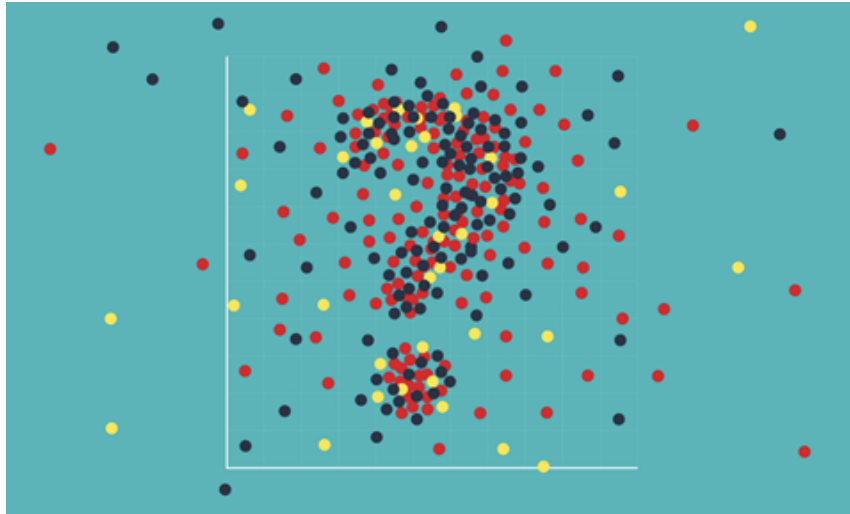




AFC COVID-19 Newsletter 5

Over the Easter weekend, COVID-19 news has been arriving in our inboxes left, right, and centre.

Below are the best bits and pieces to keep you in the loop...



Current Status

Internationally, there have been 1,862,028 proven cases of COVID-19 and 114,980 deaths so far. Globally mortality is approximately 6%. Global statistics can be found [here](#).

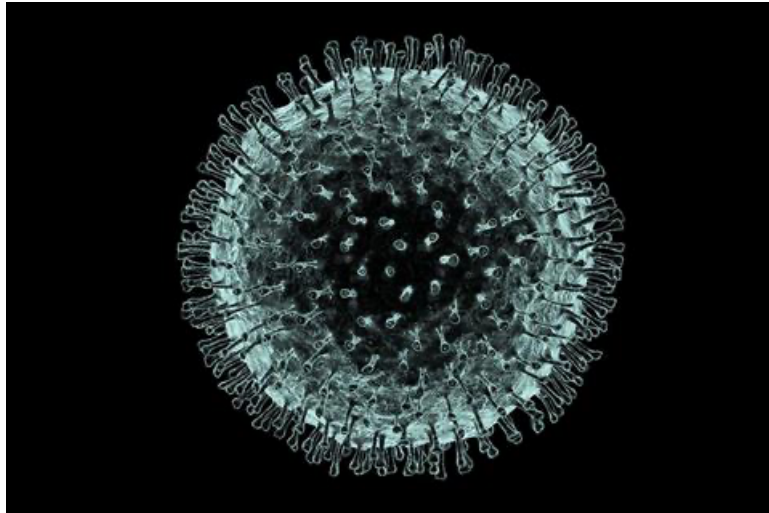
Nationally, there have been 6,359 confirmed cases of COVID-19 in Australia. There have been 61 deaths reported. Australian mortality stands at approximately 1%. National statistics can be found [here](#).

Locally, there are a total of 431 confirmed cases in South Australia. There are currently six patients in the ICU at the RAH who are COVID-19 positive. Sadly, there have been four COVID-19 deaths so far in South Australia.

Overall, our numbers appear promising, suggesting that we are 'flattening the curve'.

Click below to see how Australia's numbers compare to other nations'.

Interactive tool



SA Health

SA Health urged everyone to stay at home over the Easter weekend. It appears the 'Stay at Home' campaign was a success.

SA Health has also established a website avatar named "Zoe" who helps users to navigate the SA Health website.

SA Health Update



Respiratory Clinics

Commonwealth-Funded Respiratory Clinics have opened up in Adelaide. Australian Family Care is lucky to be involved in this remarkable venture with one opening up at Reynella Family Care hopefully this week.

These clinics will help patients in need of assessment who do not fit the current criteria for testing but present with COVID-19-like symptoms.

More information can be found below.

Respiratory Clinics



SA Pathology

As a reminder, SA Pathology has established two dedicated Collection Centres to reduce the risk of exposure to infectious diseases for immunocompromised and vulnerable patients.

These centres are located at the Metro Shopping Centre, 254 Unley Road, Hyde Park and the Elizabeth GP Plus, 16 Playford Blvd, Elizabeth. This is an appointment only

service.

Patients can call 8222 3000 to book.

More information from SA Pathology to come.



Drive-through Flu Clinic

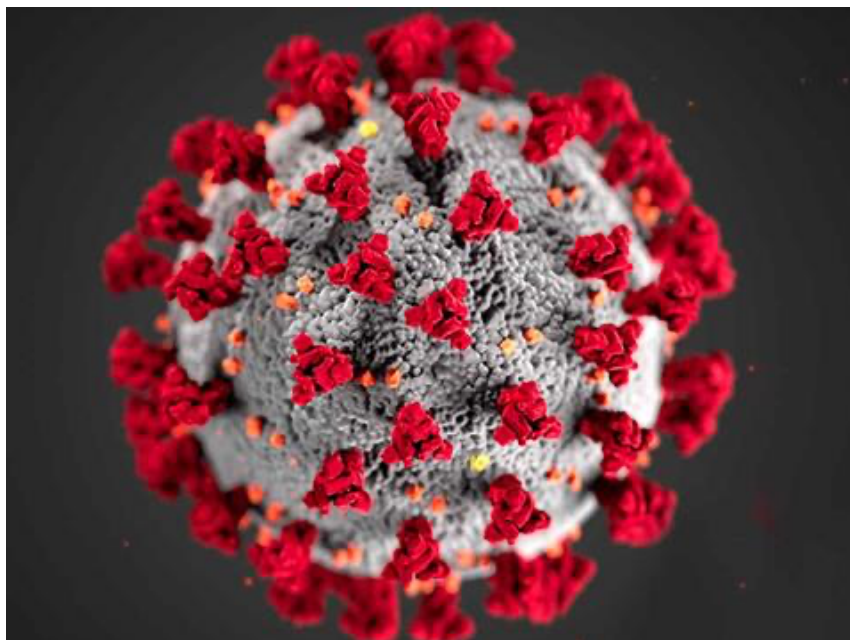
In light of the COVID-19 pandemic, it is more important than ever to ensure patients receive their flu immunisation.

A successful drive-through flu clinic has been set up at McIntyre Medical Centre.

It is open to our own patients as well as to patients whose clinics are unable to provide this service during the pandemic.

Information regarding the next flu clinic will be posted on our website.

McIntyre Medical Centre



Symptom Tracker

A community symptom tracker has been developed by the Public Health Information Development Unit (PHIDU) with support by the Immunisation Coalition.

Their goal is to recruit Australians and track their health status daily. If people become sick with COVID-19, then the symptoms reported prior to disease onset can be identified.

These symptom trends will then be able to develop a 'symptom roadmap' which can then be used to inform public health guidelines.

Click below for more information.

Symptom Tracker



Pharmacy Advice

We are all aware that scripts can now be faxed (or e-faxed) to a designated pharmacy. As a reminder, there is no need to send an original script if the script is labelled with the designated pharmacy's name and address.

Once new legislation is passed, printed and signed S4 and S8 scripts can be forwarded via email, sms etc.

More information can be found below.

Prescribing Information



Aged Care

There is ambiguity regarding whether or not nursing home residents require 14 days of self-isolation after

visitation to tertiary hospitals and/or OPD appointments. Given the high risk of COVID-19 exposure at our public hospitals at present, and the vulnerability of these patients, we encourage this quarantining practice.

Please let us know if you come across any guidelines regarding this matter.

Below is important information regarding management of outbreaks in aged care facilities and infection prevention strategies.

Aged Care Resources

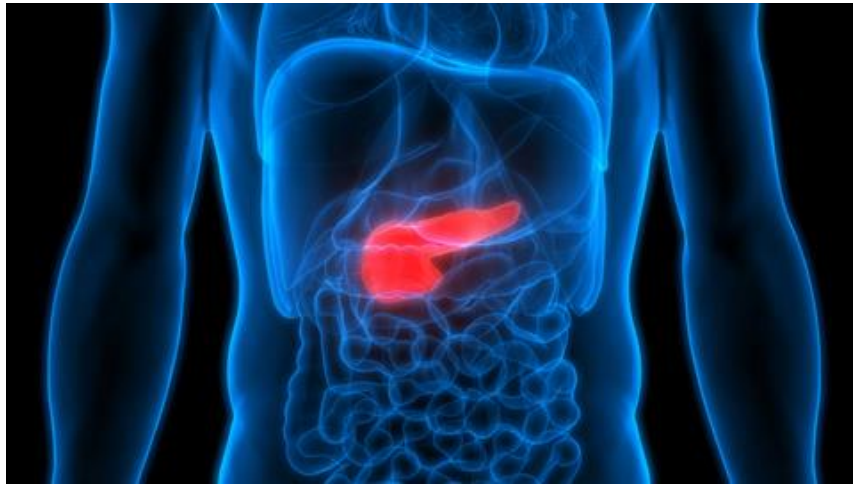


Telehealth

The RACGP has recorded a webinar regarding telehealth consultations during the pandemic. This webinar includes:

- an overview of new MBS items
- tips on implementing telehealth
- practicalities of delivering a consultation over the phone or video
- hardware and software requirements

Telehealth Webinar



Diabetes

The RACGP has developed new guidelines for the management of diabetes during the pandemic.

Please click below for access.

Diabetes Management



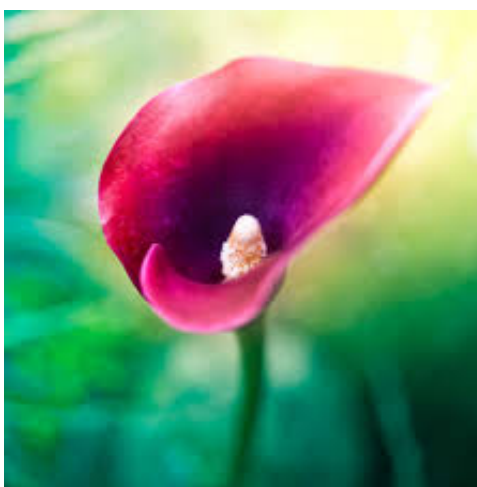
Pregnancy and Children

There is little data on the effects of COVID-19 on children and during pregnancy. Indeed, there have been concerns about ante-natal care during the pandemic. It is not known whether COVID-19 affects birth outcomes, or treatment outcomes in children who are immunocompromised.

Dr Gavin Wheaton and Professor Jodie Dodd from the Women and Children's Hospital present talks on these topics. There are also online ante-natal classes available.

Click below for further information.

Further informaiton



Palliative Care

Professor Meera Agar, Chair of Palliative Care Australia gives important advice about end-of-life care. A transcript of this radio interview can be found [here](#).

The Australian COVID-19 Palliative Care Working Group has a designated COVID-19 website and has provided a statement on palliative care during COVID-19.

Click below to read more.

Working Group Website



Spirometry and Nebulisation

The Thoracic Society of Australia and New Zealand and the Australian and New Zealand Society of Respiratory Science advise the suspension of spirometry unless it is deemed clinically essential, due to the potential risk of transmitting SARS-CoV-2.

Further to this, they recommend the use of spacers rather than nebulisers wherever possible due to the potential of droplet spread.

Further information can be found below.

Thoracic Society Statement



COVID-19 Therapies

There are many pharmacological therapies that are being used or considered for treatment of COVID-19. These include the use of plasma therapy.

This method dates back to the 1890s. It involves giving patients an infusion of antibody-rich plasma from people who have recovered from the SARS-Cov-2 infection.

The rationale is that an infusion of antibody-rich plasma may boost a generalised immune response.

Below is an important paper published by the Infectious Diseases Society of America regarding guidelines on the treatment and management of patients with SARS-Cov-2 infection.

Treatment Guidelines

Recent guidelines

[RACGP Guidelines for Management of Diabetes during COVID-19](#)

[SA Health Flowchart 'What You Should Do'](#)

[Australian 'Living Guidelines' for the Clinical Care of people with COVID-19](#)



The AFC COVID-19 Response Team is dedicated to keeping our staff and patients safe.

If you have any suggestions, news, or queries please drop us a line.

AFC COVID-19 Response Team
84 Shipsters Road
Kensington Park Adelaide
South Australia 5068
email: renee.petrilli@australianfamilycare.com
phone: +61(08) 83324280
www.australianfamilycare.com



[Preferences](#) | [Unsubscribe](#)